

## **PROJECT REVIEW – GIMLI WWTP**

The initial 14 week trial treatment with the BactiDomus Technology product (402) began on August 26, 2010 and will continue into early December. Treatment was initiated with two concurrent weekly doses of 5 kg of product applied to Digester 1 and 7.5 kg applied to Digester 2. Subsequent doses were applied bi-weekly. The product for Digester 1 was applied directly into the Digester during an aeration cycle. The product for Digester 2 was applied into the WAS (no polymer during in WAS during application) and then flushed into Digester 2 with additional WAS.

On October 28, 2010 a second BactiDomus Technology product (403) was substituted for the 402 in Digester 2 because of the concerns about the low DO.

Based on the data provided by Dillon the following changes have taken place (the data is laid based on the flow of sewage through the system):

SBR: 36.7% average increase in VOS (4 data points prior to treatment; 9 after treatment initiated –no values available for last four weeks)

WAS: 27.1% average increase in VOS (4 data points prior to treatment; 13 after treatment initiated)

Drum Thickener: 13.7% average increase in VOS (3 data points prior to treatment; 8 after treatment initiated)

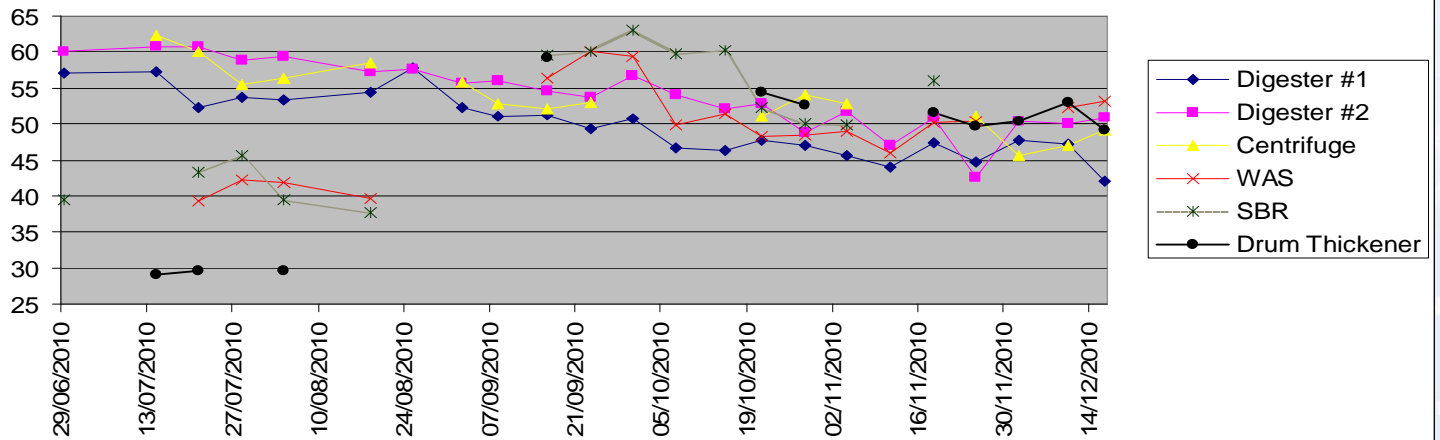
Digester 1: 13.7% average reduction in VOS; 17.7% average increase in ASH (7 data points prior to treatment; 16 after treatment initiated)

Digester 2: 12.6% average reduction in VOS; 18.8% average increase in ASH (7 data points prior to treatment; 16 after treatment initiated)

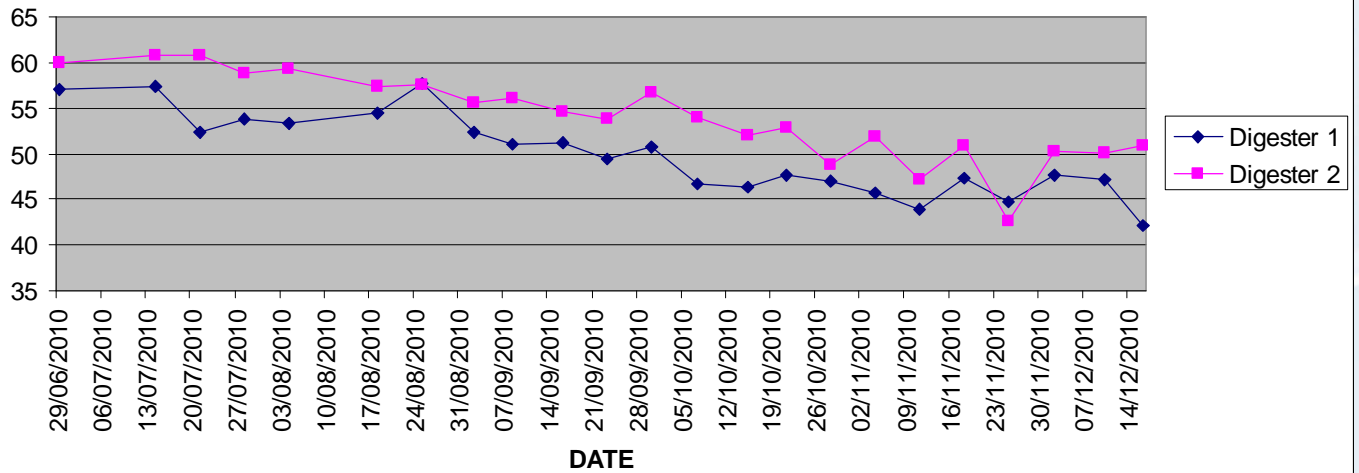
Centrifuge: 12.3% average reduction in VOS (5 data points prior to treatment; 11 after treatment initiated)

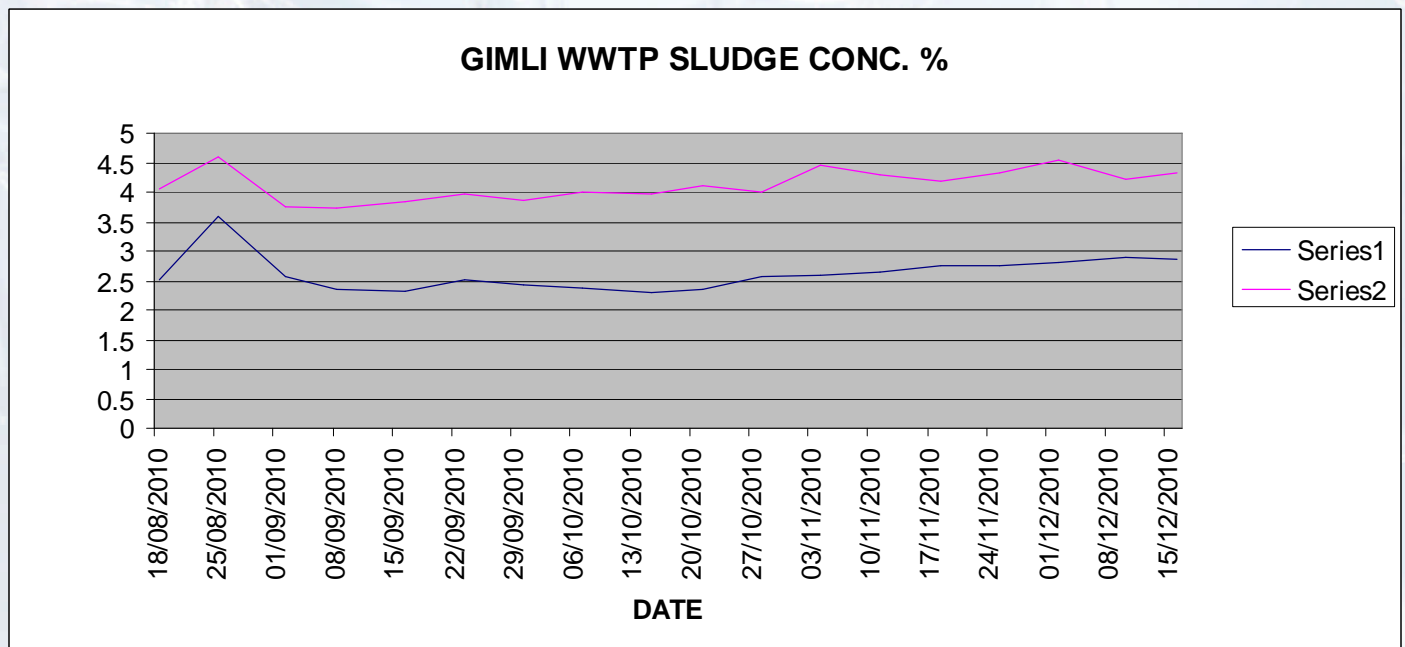
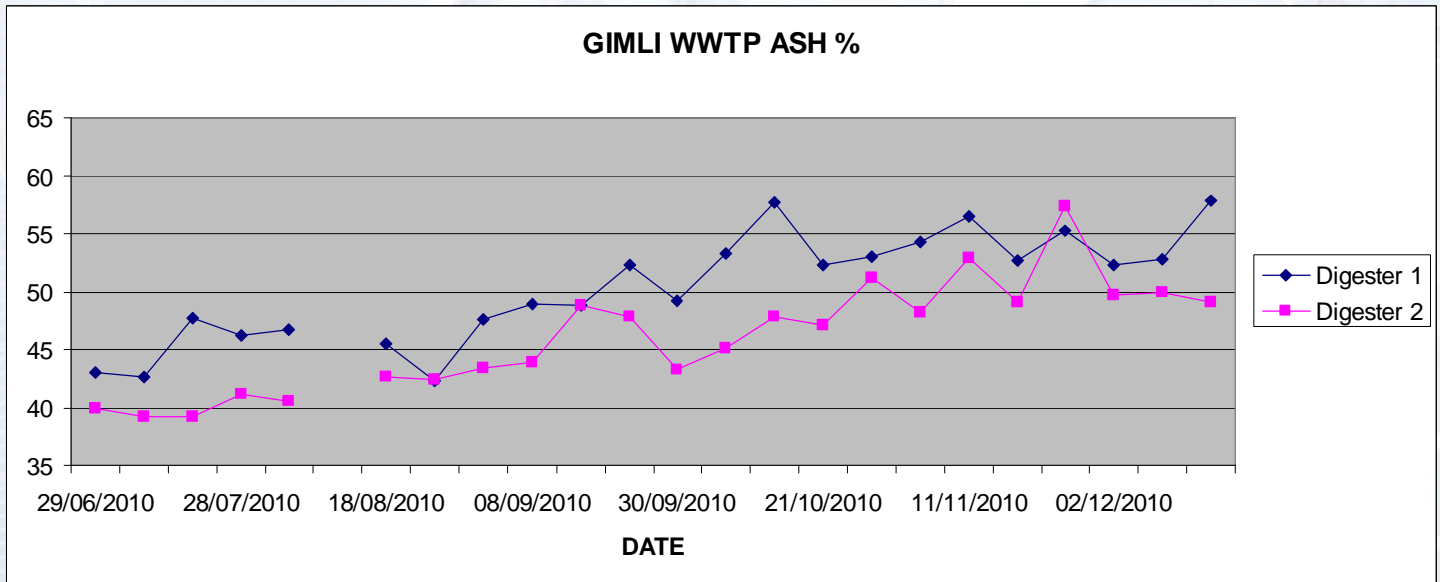
**(SEE GRAPHS BELOW – ALL DATA PROVIDED BY DILLON ENGINEERING, SUPERVISING THE PROJECT ON BEHALF OF THE R.M. OF GIMLI)**

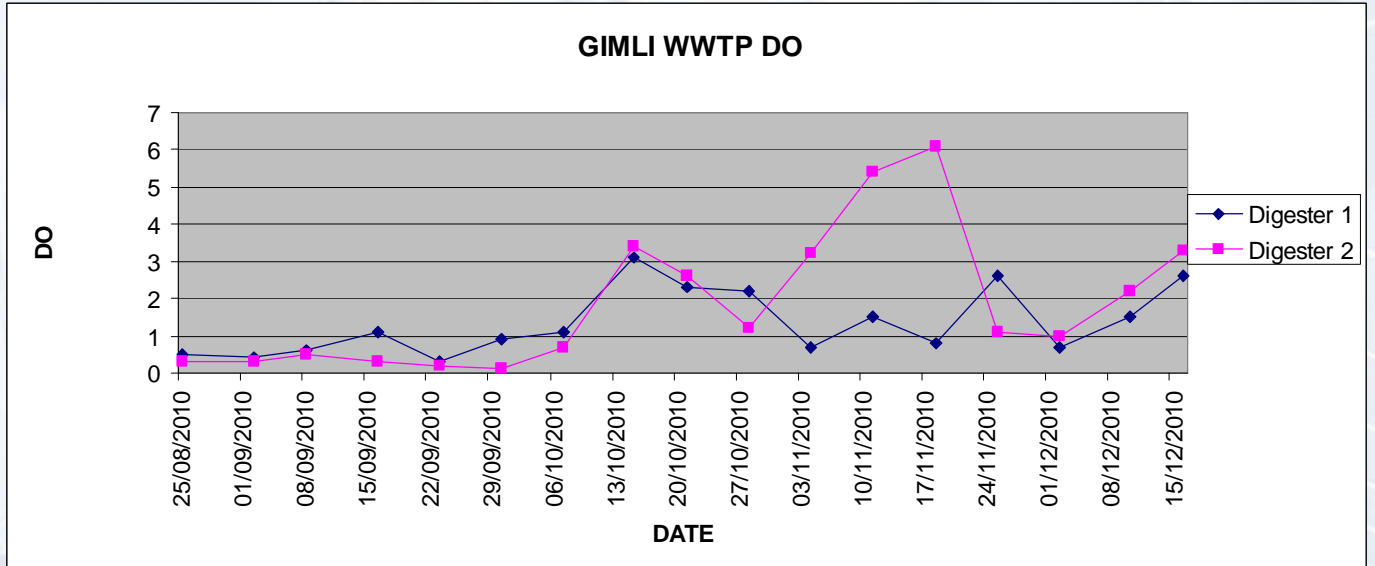
**GIMLI WWTP VOS**



**GIMLI WWTP VOS %**







PHONE: 1-204-261-1801  
FAX: 1-204-269-9097  
EMAIL; [INFO@NORDEVCO.NET](mailto:INFO@NORDEVCO.NET)  
WWW.NORDEVCO.NET